



Sample Procyon 2100-20 Battery Test System

## Key Features

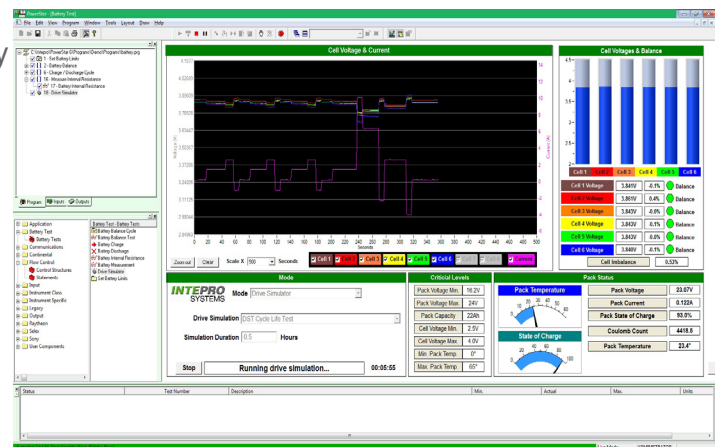
- Highly efficient (>93%) bi-directional charge/discharge power stage
- Regenerative technology for lower operating costs
- Compact design - desktop or rack mount - saves floor space
- Scalable Solutions from 5kW – 480kW allows reuse for quicker ROI
- Voltages from 40V to 1500V; currents up to 8,000A covers all pack technologies
- Built-in arbitrary generator for complex charge and discharge curves
- Automated test sequencer or manual control
- Ability to set critical safety levels for voltage, current and temperature

## Right Size for Your Budget

Intepro Systems brings its scalable, flexible hardware and software architecture to battery testing. Specifically designed for the high-performance batteries used in electro mobility, the PTS-2100-20 is built around Intepro's high powered bidirectional PSB source/load combination or the ELR / PSI load and source equivalent. These compact systems are teamed with Intepro's PowerStar test sequencer to provide for fill-in-the-blank test generation to customize the test sequences to your unique requirements.

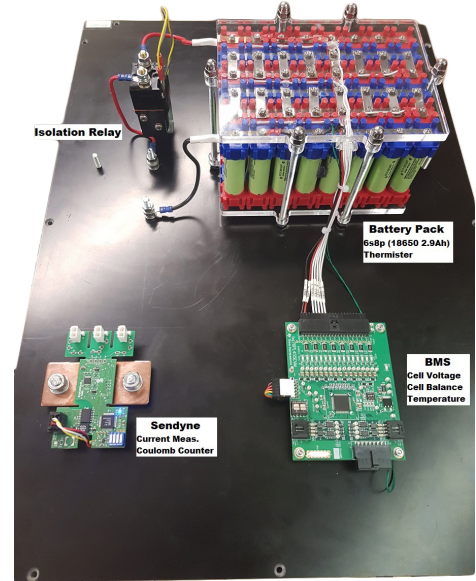
With nearly 40 years of experience, Intepro Systems provides cost-efficient custom solutions to the energy test markets. PowerStar offers "Programming without Coding"™ that lets our customers define the charge and drive profiles unique to their vehicles or to a particular standard. Internal resistance measurements and cell balancing can be performed as required.

PowerStar provides a simple environment to allow hardware modules to be interchanged and added. This flexibility provides obsolescence management ensuring the test system can be expanded, upgraded, and repurposed as new vehicles, batteries and test standards are developed.



## Technical Data

- Source Mode: Real-world efficiency up to 93%
- Sink Mode: Recoup up to 95% of loaded energy
- AC Line 340-528 VAC 2-phase or 3-phase
- DC Voltage: <0.1% Accuracy
- DC Current: <0.2% Accuracy
- DC Power: <1% Accuracy
- DC Resistance: <1% + 0.3% of nominal current
- Programmable Protection: OT, OVP, OPP, PF, OCP
- Standards: EN 61326, IEC 1010, EN 61010; IEC 61000-6-2:2005; IEC61000-6-3:2006 Class B



Power	5,000W	10,000W	15,000W	>15,000W
<b>Voltage</b>	<b>Current</b>			
0...60V	0...120A	0...240A	0...360A	Up to 5,760A
0...80V	0...120A	0...240A	0...360A	Up to 5,760A
0...200V	0...70A	0...140A	0...210A	Up to 3,360A
0...360V	0...40A	0...80A	0...120A	Up to 1,920A
0...500V	0...30A	0...60A	0...90A	Up to 1,440A
0...750V	0...20A	0...40A	0...60A	Up to 960A
0...1000V			0...40A	Up to 640A
0...1500V			0...30A	Up to 480A

## Contact Us

### United States

Intepro Systems America, LP  
 14662-E Franklin Ave  
 Tustin, CA 92780  
 Tel: 1 714 953 2686  
 sales@inteproate.com  
 www.inteproate.com

### United Kingdom

Intepro UK Ltd.  
 9 Lakeside Business Park  
 Swan Lane, Sandhurst Berkshire  
 GU47 9DN / UK  
 Tel: 44 012 5287 5600  
 sales@inteproate.com

### China

Intepro Power Electronics  
 (Shenzhen) Co., Ltd  
 No. 828, Block 7,  
 Fourth Industrial Area  
 Nanyou, Nanshan District  
 Shenzhen, China 518052  
 Tel: 0086 755 86500020  
 sales@inteproate.com